



CAFE LATTE ROSE GUIDE

THE FLORAL COACH

x

MAYESH WHOLESALE

Café Latte is a special rose that was hybridized by De Ruiters Rose Breeding at their nursery in Aalsmeer, Holland. In color, it is a complex rose, with a base of light beige-gray, infused with lavender and brown hues, and hints of pink, red, and lilac. Café Latte has an informal center, with relaxed petals forming a cup-shaped bloom, very much in the vein of old European garden roses. It is also a precocious rose, that is quite difficult to grow, and which has a low yield relative to most commercial cut roses. As a result, it is only grown by a handful of rose farms.

The vase life of Café Latte is comparable to garden roses, which when put in water, will provide around five days of beauty and performance. Therefore, it is not recommended for weekly installations in hotels and residences. Café Latte is an ideal flower to use in sophisticated weddings and signature events.

Mayesh invites you to include this rose in your designs and enjoy the complexity and sophistication it brings to floral arrangements.

MOODY MONOCHROMATIC



Use this rich and moody palette inspired by the earthy red undertones of the Cafe Latte rose. By using shades of reds, burgundy, plums and browns, you can create a sophisticated palette that highlights the natural complexity of the Cafe' Latte Rose.

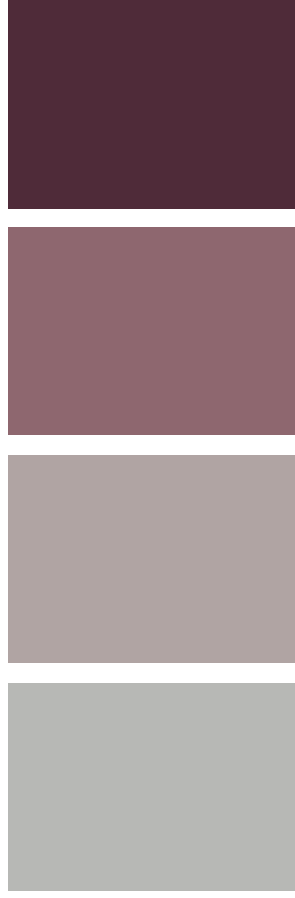
TIP: Choose brighter reds for a more vibrant contrast without affecting the color harmony and keep a darker red in the palette for an effective shade and highlight.



FLOWERS

- Rose Cafe Latte Beige/Lavender
- Queen Anne's Lace Choc Brown
- Carnation Bronze Thrill Pur/Brn
- Cosmos Chocolate Brown
- Anthurium Safari Brown
- Sweet Pea Dyed Brown
- Tulip Brown
- Spray Rose Wabara Lolli Beige
- Fritillaria Persica Brown
- Ninebark Diabolo Brown
- Dahlia Brown
- Lisianthus Japan Brown

LAVENDAR & GRAY



Lavender and gray can be used all year around but works beautifully in Fall and winter. This palette focuses on extracting the lavender undertones in the Cafe Latte. From common flowers like lavender snapdragons to button pom poms, simple flowers can be elevated next to the Cafe Latte.

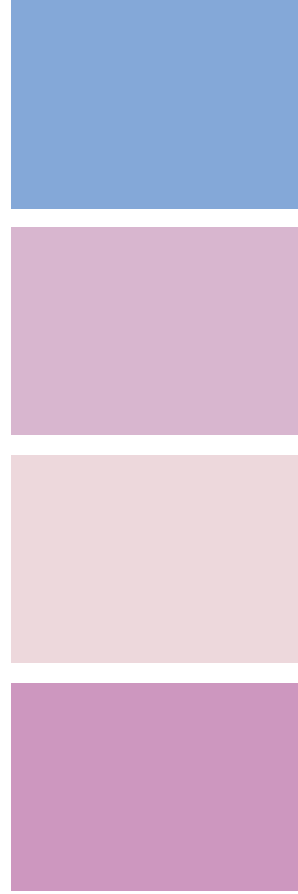
TIP: Consider your foliage. Greenery can throw a palette quickly so stick with silvery options in the foliage here like dusty miller, eryngium, cardoon, lambs ear, artemisia, pearl acacia, knife blade acacia, eucalyptus, etc. for a beautiful blend!

FLOWERS



- Rose Cafe Latte Beige/Lavender
- Acacia Foliage Purple
- Carnation Lavender
- Ranunculus Purple
- Campanula Lavender
- Spray Rose Sterling Sensation Lav
- Snapdragon Variegated Purple
- Astrantia Purple
- Anemone Powdered Pink
- Pompon Button Delirock Lavender
- Tulip Double Double Price Lavender
- Trachelium Lavender

A COOL TRIO: PINK, BLUE & LAVENDAR



Let spring and summer sing in this pastel heaven of pinks, lavenders and blues. Building on the lavender undertones of the Cafe Latte rose, this palette celebrates cool tones.

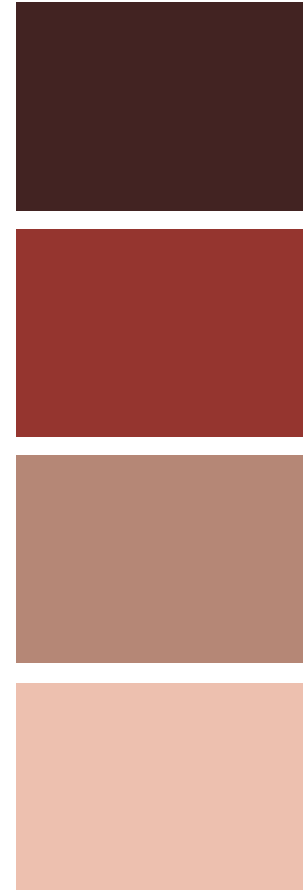
TIP: When using multiple hues or colors, it's helpful to have a hero or to create emphasis in one tone. If pink is the hero, make sure to include at least 60% of your flowers with mostly pink tones and accents of lavender and blue or vice versa. This will ensure the most balanced palette!



FLOWERS

- Rose Cafe Latte Beige/Lavender
- Lisianthus Light Pink
- Peony Dinner Plate Pink
- Blossom Almond Blush
- Lilac Pink
- Clematis Lavender
- Campanula Glomerata Lavender
- Agapanthus Blue
- Delphinium Hybrid Light Blue
- Muscari Blue
- Tweedia Blue
- Cornflower Blue

A WARM TRIO: PINK, BROWN & RED



A focus on red. The darker reds in this palette add a unique depth to the Cafe Latte by highlighting its tonal quality and by adding in pinks and browns, this palette strikes a unique balance perfect for Fall. However, this palette can be beautiful in spring and summer as well by bumping up the pink tones and using just a touch of red for contrast.

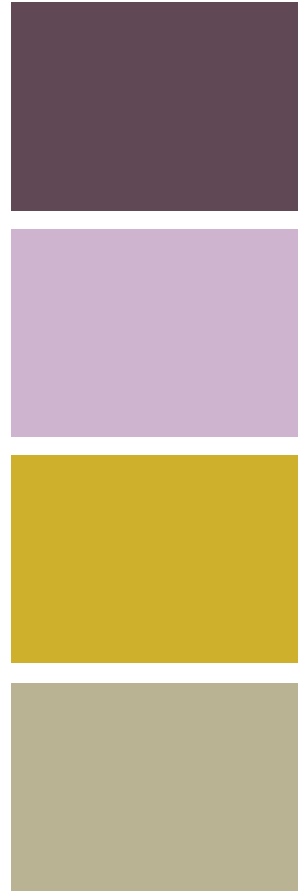
TIP: To liven up the dusty quality of the Cafe Latte rose, use a variety of bright, highly saturated pinks to create more intensity. Examples can be hot pink nerine lilies, astilbe, anemone, mini carnations, freesia, bouvardia, celosia, peonies, etc.



FLOWERS

- Rose Cafe Latte Beige/Lavender
- Riceflower Light Pink
- Alstroemeria Light Pink
- Cotinus Foliage
- Ranunculus Brown
- Ranunculus Butterfly Red
- Carnation Piet Pink/Red
- Amaryllis Orangina Orange 4B
- Amaranthus Hanging Red
- Cymbidium Red Lip Brown
- Anthurium Di Amaro Brown
- Cotinus Flowering (Smoke Bush)

OPPOSITES ATTRACT: LAVENDER & YELLOW



In this complimentary palette of lavender and yellow, stretch your creativity and create sophisticated contrast by using opposite tones on the color wheel! The Cafe Latte rose is incredibly unique as a bridge tone that works with so many colors but sings when paired with yellow. In this palette, use tints, tones and shades on two core hues of yellow and violet to create the perfect pairing!



FLOWERS

Acacia Yellow

Fritillaria Uva Vulpis Burgundy/Yellow

Stock Cream

Blossom Forsythia Yellow

Rose Cafe Latte Beige/Lavender

Daffodil Dutch Master Yellow

Iris Bearded White

Hyacinth Minos Purple

Allium Schubertii Purple

Tulip Bullit Purple

Sweet Pea Burgundy

Helleborus Purple

SPLIT IT UP! GOLDS, BEIGE & BLUE GREENS



This palette ramps up the sophistication by focusing on blue greens in the foliage, texture and focal flowers and uses the mauve undertones of the Cafe Latte as an accent color. The pop of gold helps round out the palette and adds subtle contrast to the look. TIP gold tone flowers can be tough to find but you can often try the golden/yellow carnation. There are several varieties and when they are clustered together, they are inexpensive, covers loads of surface area and add a perfect ruffly pop to any palette.



FLOWERS

- Eucalyptus Baby Blue
- Hydrangea Antique Blue/Green
- Tulip Dyed Gray
- Eryngium Magical Blue
- Dusty Miller Large Leaf Silver
- Rose Cafe Latte Beige/Lavender
- Vanda Orchid Light Brown
- Mini Carnation Masquerade Beige
- Anemone Brown
- Amaranthus Hanging Red
- Anthurium Tequila Antique Pink
- Alstroemeria Dirty Dancing Cream
- Carnation Lege Marrone Beige
- Spray Rose Sahara Beige
- Spanish Moss Gray
- Lisianthus Peach

A DYNAMIC PAIR: RED VIOLET & YELLOW GREEN



Yellow-green and varying tones of red-violets are a perfect combination of rich contrast. Nestled semi close on the color wheel, this diadic duo is a complex palette that can be achieved through focusing on a bridge flower for the Cafe Latte rose. In this palette, the antique hydrangea does the heavy lifting on color and size as it contains all three of the core hues; mauve, violets and greens. If hydrangea isn't available, any other muddy/mauve flower can do the trick and pull this palette together!

FLOWERS



- Rose Cafe Latte Beige/Lavender
- Hydrangea Antique Mauve/Green
- Clematis Purple
- Ranunculus Puyde Purple
- Fruiting Branches Plum Purple
- Tulip Double Blue Diamond Lavender
- Sweet Pea Japan Royal Queen Purple
- Cobra Lily Variegated
- Artichoke Large Burgundy
- Pistachio Foliage Green
- Allium Sativum Ophioscordon Green
- Basil Green
- Ligularia Leaf Green
- Mini Carnation Green
- Lotus Pods Green
- Hellebore Single White/Green

CLASSIC WHITE WITH A TWIST: THE NEW NEUTRAL



Blush and bashful has a new friend and it's the Cafe Latte rose! This earthy violet mauve rose bring sophistication to a classic blush and white palette and adds a layer of interest and depth. Use blender tones like rose colored hues, muddy pinks, and creams to create bridge tones between all of the subtle color shifts.

TIP: When using white flowers, keep in mind that all white flowers contain color so notice if the white is more cool and has more blues and violets or contains more yellow/greens and choose accordingly!

FLOWERS

- Rose Cafe Latte Beige/Lavender
- Grass Melina Mauve
- Sedum Brown
- Rose Barista Mauve
- Tulip Double Brownie Brown
- Chrysanthemum Disbud Linette Peach
- Stock Peach
- Ranunculus Butterfly Lycia Pink
- Carnation Brut Blush
- Cotinus Flowering (Smoke Bush)
- Spray Rose Jeanine Cream
- Sweet Pea White
- Tweedia White
- Spirea Cantoniensis White
- Hydrangea Pee Gee Green
- Ninebark Green

